

LOW VACUUM ALARM



DESCRIPTION

The Busch Low Vacuum Alarm is used to signal, both visibly and audibly, a low vacuum condition. Many processes or facilities require such alarms in the event of a failure of such critical components as a vacuum pump.

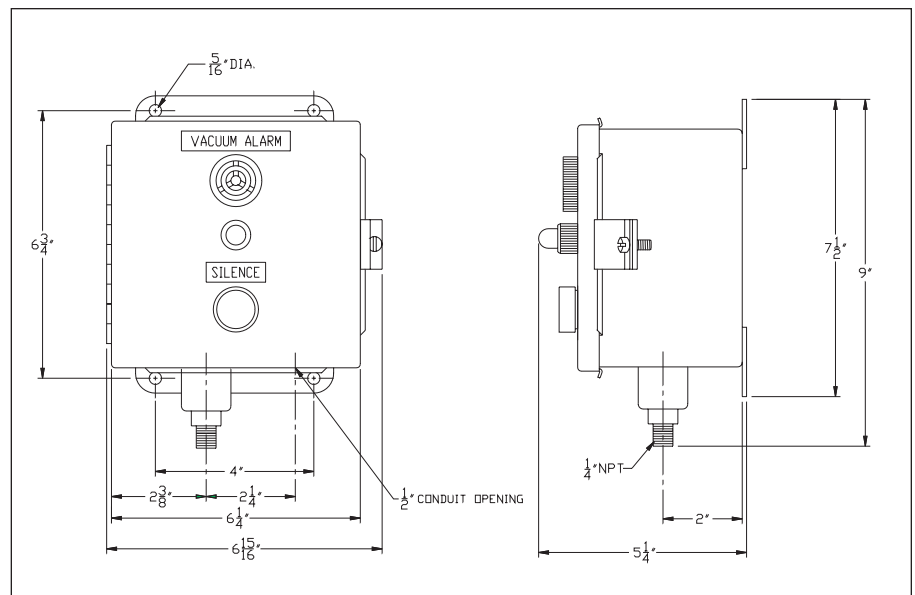
The Busch Low Vacuum Alarm is field adjustable to any vacuum level below 29" Hg. A red light signals the low vacuum condition visibly, while a 95 dBA alarm sounds audibly. The alarm may be deactivated by a push-to-silence button. The alarm, complete with vacuum switch, is packaged in a 6"x6"x4" NEMA 12 enclosure (wired for 120 volts).



FEATURES

- Audible and visual signals
- Push-to-silence button
- Includes vacuum switch
- NEMA 12 enclosure

DIMENSIONAL DATA



Dimensions in inches

LOW VACUUM ALARM



Busch, Inc.

516 Viking Drive
Virginia Beach, VA 23452
Phone (757) 463-7800
FAX (757) 463-7407
www.buschpump.com

**For more information call
1-800-USA-PUMP**

ISO 9001 Registered Company

Holland, Spain, Switzerland, Sweden, Turkey, Denmark, England, Australia, Italy, France, China, Germany, Taiwan, Japan, Austria, Canada

Models and specifications are subject to change without notice.

LVA-12-11/02-1M